

## Advantages of the 5-axis dressing machine

- Fully enclosed and C.E. Certified.
- Solid and vibration resistant construction.
- Rotated light source and camera protection sleeve avoiding dust and oil influencing image quality.
- Software provided with pre-generated DXF shapes including uploading your special DXF forms.
- Profiling accuracy within  $\pm 5\mu\text{m}$ .
- External filtration system filtering within  $10\mu\text{m}$ .
- Possibility to connect to an external extraction unit for oil mist.
- Accuracy of concentricity  $\pm 2\mu\text{m}$ , Quick spindle change (No calibration required).
- Predefined application cycles for each type of profiling, easy to manage.
- Quick positioning of the grinding wheel axes during set-up.
- Constantly controlled peripheral speed from grinding spindle and dressing spindle.
- Oscillation and B-axis feedrate in automatic.
- Automatic programmable infeed pass (Operator does not need to participate 100% during dress process).
- Programmable number of sparking between each pass to ensure high quality surfaces and profiles.
- Works up to 3 axes simultaneously dressing angles/faces/radii including large radii between wheels without removing wheels from the wheel pack.
- The coolant reduces the load by constantly cleaning the grinding and dressing wheel. The standard heat generating will be eliminated during the dressing process which results in bond burning protection, extending wheel lifetime and direct improvement from performance and quality of the dressing process.

# ASA 300<sup>w</sup>

## Semi-automatic Machine for dressing Diamond & CBN wheels



Action Super Abrasive SA  
11, Prés - Bersot  
2087 Cornaux  
Switzerland

Tél. +41 32 757 37 85  
info@actionsuper.ch  
www.actionsuper.ch



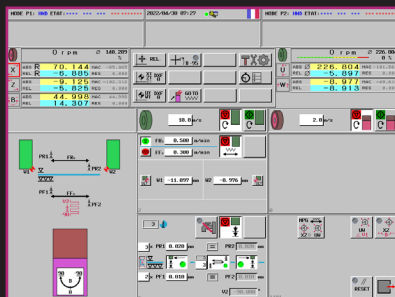
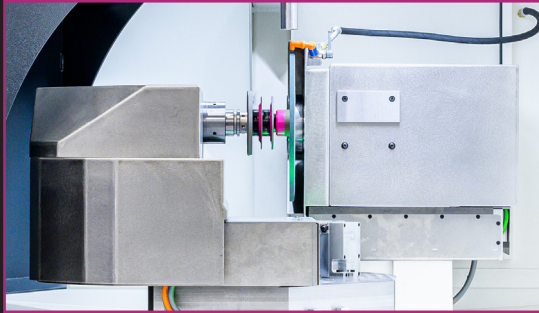
Action SuperAbrasive INC  
945 Greenbriar Parkway  
Brimfield, Ohio 44240  
USA

Tel. +1 330 673 7333  
info@actionsuper.com  
www.actionsuper.com

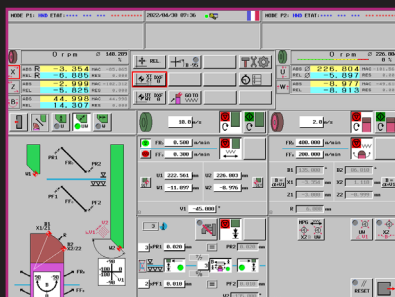
SWISS PRODUCT



ACTION SUPER ABRASIVE SA



From straight face profiling to large radii profiling between 2 grinding wheels



## TECHNICAL DATA

### RANGE

Ø CBN / diamond grinding wheel	0 - 280 mm or 20 - 300 mm
Ø dressing wheel (SiC)	160 – 300 mm

### CONTROL

Fanuc PowerMotion IA	Touch Screen 21"
----------------------	------------------

### AXIS

X Axis	Stock	140 mm
	Feed	0 - 5000 mm/min
Z Axis	Stock	140 mm
	Feed	0 - 5000 mm/min
B Axis	Stock	185°
	Feed	0 – 1800°/min
W Axis	Stock	90 mm
	Feed	0 - 5000 mm/min
U Axis	Stock	80 mm
	Feed	0 - 5000 mm/min

### SPINDLE DRESSING WHEEL

Motor integrated Fanuc Bil 50LL/25000	2.5 kW
Spindle speed	0-2500 rpm
Constant surface speed	m/sec

### SPINDLE GRINDING WHEEL

Motor Fanuc ALPHA IS 2/5000HV-B	1.0 kW
Spindle speed	0-2500 rpm
Constant surface speed	m/sec

### CAMERA

Camera magnification	23x
----------------------	-----

### DIMENSIONS

L x l x H	1500 x 1200 x 1900 mm
Net weight of machine	1500 kg
Total Power	8 kW
Compressed air	3-4 bars

### COOLANT TANK

120 Litre tank capacity with paper filtration system

### OPTIONS

CNC machine spindles available upon request  
 Flange for dressing wheel T=10 mm  
 Flange for dressing wheel T=20 mm  
 Flange for dressing wheel T=32 mm

\* Specifications are subject to change without notice